

DataTrac Pro for Pocket Pump TOUCH User Manual

Publication 1917 Rev 1711

Introduction

Checking System Requirements

Ensure your PC meets minimum requirements for the DataTrac® Pro Software.

Operating System	Microsoft® Windows® 7, 8, 8.1, or 10
Required Software	DataTrac Pro Installer (<i>included with installation</i>)
Minimum Display Resolution	1024 x 768
Available Port	USB 2.0

Checking Hardware Requirements

- USB Bluetooth® Adapter Cat. No. 877-94 for Pocket Pump TOUCH
- Pocket Pump TOUCH Sample Pump Cat. No. 220-1000TC

Getting Started

Connecting Pocket Pump TOUCH to PC


The Pocket Pump TOUCH communicates with a PC via USB Bluetooth connection (dongle) and DataTrac Pro Software (Figure 1). **Note:** USB Bluetooth Adapter Cat. No. 877-94 is the dedicated and required dongle for Pocket Pump TOUCH.

1. Insert the USB Bluetooth Adapter (dongle) in a USB port on the PC.
2. Download and install the DataTrac Pro Installer. See *Downloading/Installing DataTrac Pro Software* below.
3. Launch DataTrac Pro. **DataTrac Pro will only detect pumps that are powered on.** For optimal connection, ensure that pumps are near the PC.



Figure 1. Communication Train

Downloading/Installing DataTrac Pro Software

 **The DataTrac Pro Installer requires administrator privileges to install properly. DataTrac Pro must be installed separately under the Windows user account of each person who will use the software.**

If no Internet connection is available, contact SKC at 724-941-9701 (800-752-8472 U.S. only) to order Cat. No. P87794U (DataTrac Pro Software and User Manual on USB flash drive).

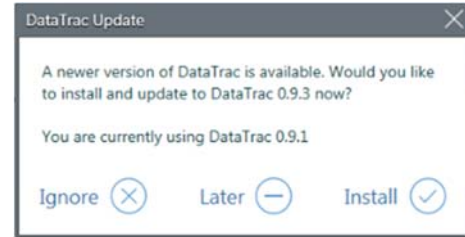
1. Download file located at www.skcinc.com/catalog/datatrac/DataTracProPPT/Setup.exe or on provided flash drive.

2. Browse to download folder/flash drive, run the setup file, and follow wizard instructions. If the User Account Control display box appears, enter the administrator user ID and password.
3. When installation is complete, DataTrac Pro will launch automatically. Ensure that the dongle remains inserted in a USB port on the PC and pumps are powered **on** when launching and using DataTrac Pro.



Updating DataTrac Pro Software

Launch DataTrac Pro Software. DataTrac Pro will scan automatically for available online updates. If an update is found, the user will be asked to install now, install later (user will be prompted to update each time DataTrac Pro is launched), or ignore (user will be directed to an Update Available link on the Help page).





During the update, the DataTrac Update box (above) will display a progress bar; when the download is complete, DataTrac Pro will launch automatically.

Uninstalling DataTrac Pro Software

1. Access the Windows Control Panel on the PC.
2. Select Programs (Programs and Features in Windows 7).
3. Select DataTrac Pro for Pocket Pump TOUCH.
4. Click Uninstall.

Using this Manual

This manual provides graphical guidance to the user. Areas on screens that require user action are highlighted  or . Corresponding text descriptions/details are highlighted in a matching color.

Interacting with DataTrac Pro Software Screens

Click tabs and buttons with mouse to activate or select items. Click in boxes and type using keyboard to enter required information.

Setting Display Preferences for DataTrac Pro

- Before using DataTrac Pro, open the DataTrac Unit Display box to select display preferences for DataTrac Pro and set STP criteria (if required).

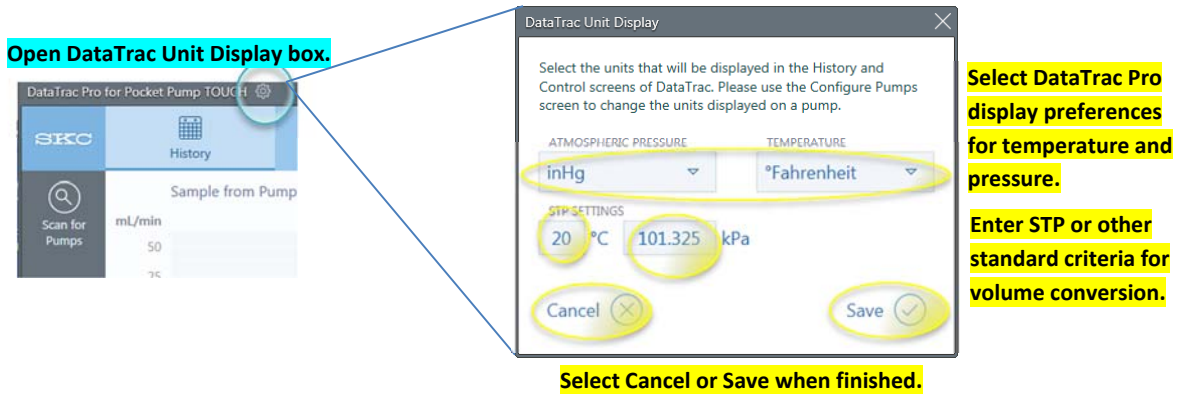


Figure 2. DataTrac Pro Unit Display Box

Using DataTrac Pro Software

- Ensure that USB Bluetooth Adapter is inserted in USB port on PC. Pumps must be powered on to be detected by DataTrac Pro. For optimal connection, ensure that pumps are near the PC. Once communication is established between the PC and the pumps, the pumps will be kept in a wakened state until powered off.

Downloading/Managing Sampling History History Tab

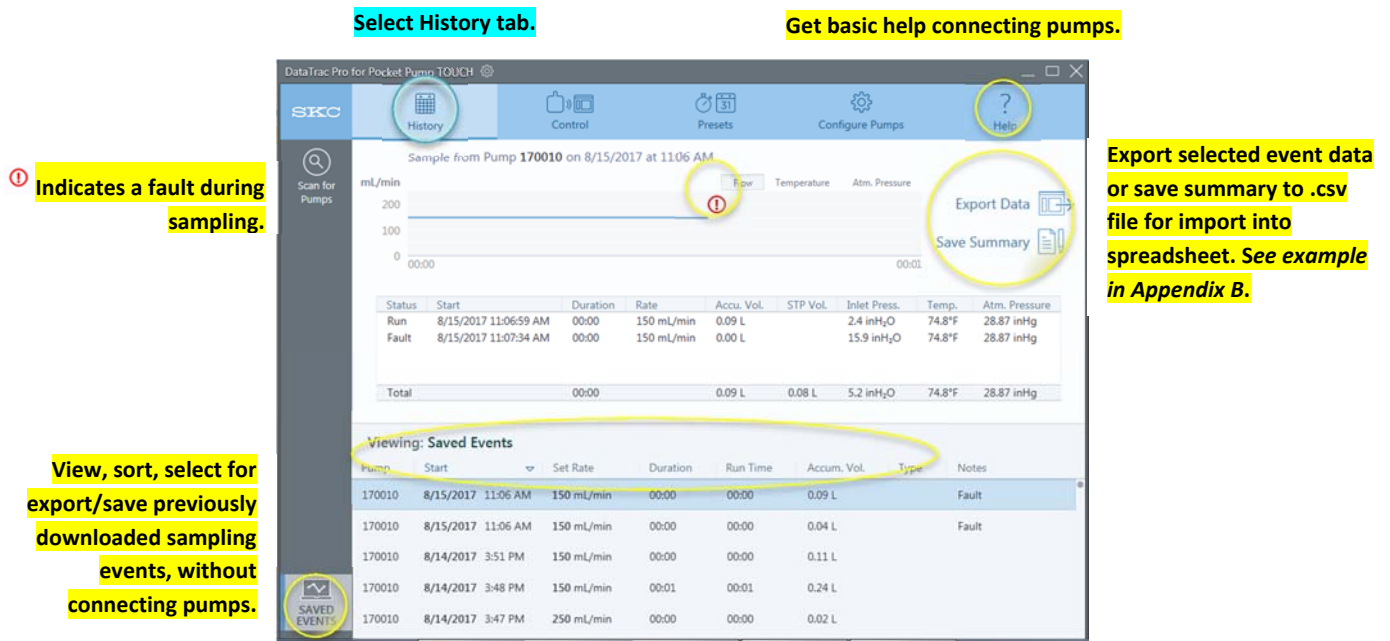



Figure 3. History Tab Prior to Pump Connection

Detecting Pumps

 **Pumps must be powered on to be detected by DataTrac Pro. For optimal connection, ensure that pumps are near the PC.**

Once launched, DataTrac Pro scans for pumps connected by Bluetooth to the PC. Detected pumps are displayed as an icon and serial number in the Pump Display Bar. If pumps do not appear automatically in the bar, click Scan for Pumps.

Select History tab.

Scan for connected pump(s).

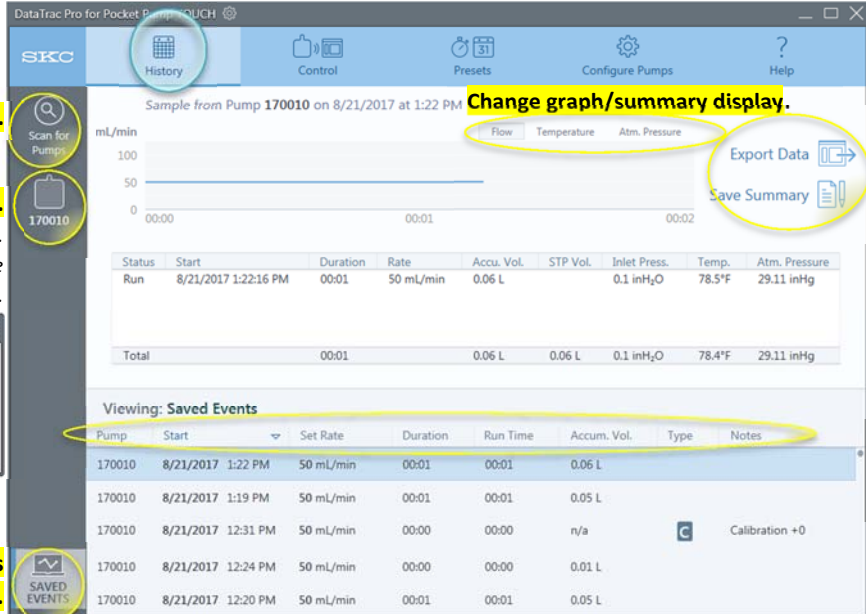
Select pump to download/view history.
Note: Stop pump before downloading history.
"Pump busy" will display if attempted while pump is running or paused.

Change graph/summary display.

Export selected event data or save summary to .csv file for import into spreadsheet. See Appendix B.

Sort pump history or saved events by selecting column head.

Display saved events from all pumps.



Status	Start	Duration	Rate	Accu. Vol.	STP Vol.	Inlet Press.	Temp.	Atm. Pressure
Run	8/21/2017 1:22:16 PM	00:01	50 mL/min	0.06 L		0.1 inH ₂ O	78.5°F	29.11 inHg
Total		00:01		0.06 L	0.06 L	0.1 inH ₂ O	78.4°F	29.11 inHg

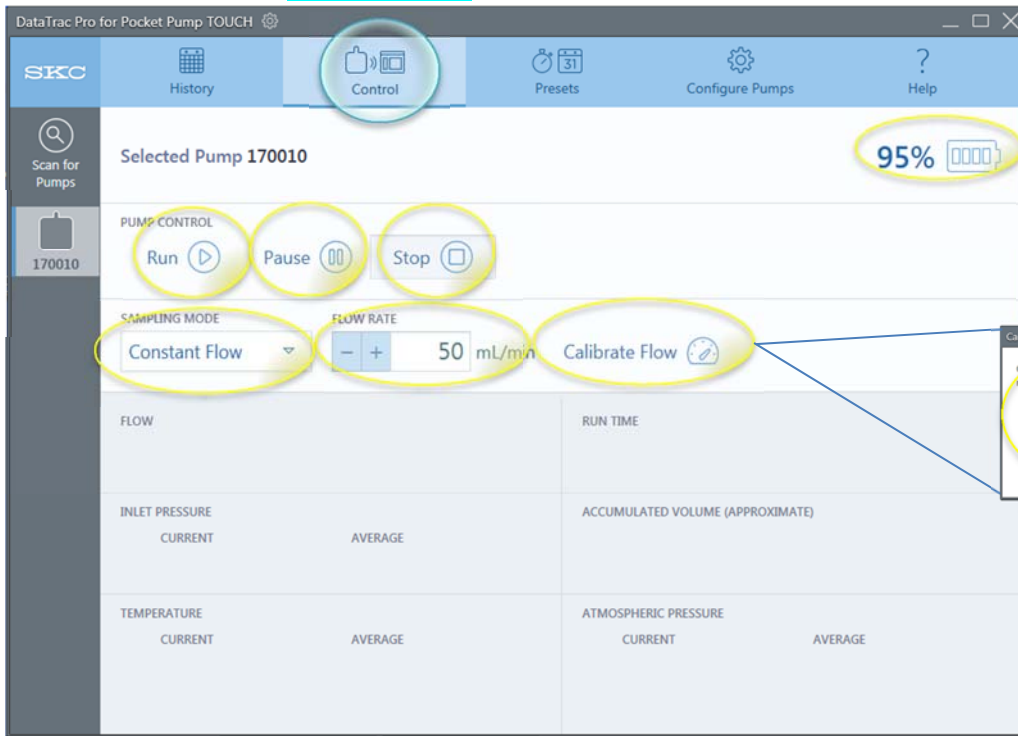
Pump	Start	Set Rate	Duration	Run Time	Accum. Vol.	Type	Notes
170010	8/21/2017 1:22 PM	50 mL/min	00:01	00:01	0.06 L		
170010	8/21/2017 1:19 PM	50 mL/min	00:01	00:01	0.05 L		
170010	8/21/2017 12:31 PM	50 mL/min	00:00	00:00	n/a		Calibration +0
170010	8/21/2017 12:24 PM	50 mL/min	00:00	00:00	0.01 L		
170010	8/21/2017 12:20 PM	50 mL/min	00:01	00:01	0.05 L		

Figure 4. History Tab Displaying Connected Pumps

Controlling the Pump Control Tab

Select Control tab.

Run, Pause, or Stop selected pump.
Click Run to resume a paused run.
Select Constant Flow or Constant Pressure.
See Figure 5a for constant pressure mode display.



View pump battery charge status

Calibrate selected flow rate.

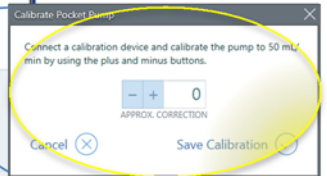


Figure 5. Display Before Run is Clicked

Enter back pressure (see pump operating instructions).



Figure 5a. Constant Pressure Mode Display Before Run is Clicked



Figure 6. Display After Run is Clicked

Programming and Uploading Sample Presets

Presets Tab

- 🚫 Stop pump before programming presets. "Pump busy" will display if attempted while pump is running or in pause.



Select Presets tab

PRESET 1

MODE
 Constant Flow
 Constant Pressure

FLOW RATE
 133 mL/min

TIMING
 Continuous
 Intermittent

DURATION
 00 : 00 : 06
 Day(s) H M

START TIME
 No
 Yes
 TIME*
 03:30 PM
 HH:MM

ESTIMATED SAMPLE VOLUME
 0.80 Liters

* The pump will automatically start at the prescribed time only after this preset is activated on the pump.

Copy

Copy Preset to Other Pumps
 Copy preset 1 from PocketPump 170030 by selecting pumps from the list below:
 170023
 170043
 170066
 Cancel Copy Preset Now

Select mode and timing (run type); change/enter flow rate and total duration.

Select/enter start time.*

Upload preset to selected pumps. Select first pump, press Shift and click on last pump listed to select all pumps.

PRESET 2

MODE
 Constant Flow
 Constant Pressure

FLOW RATE
 250 mL/min

TIMING
 Continuous
 Intermittent

DURATION
 00 : 04 : 00
 Day(s) H M

CYCLES
 120

SAMPLE
 00 : 01
 H M

PAUSE
 00 : 01
 H M

START TIME
 No
 Yes

TOTAL SAMPLE TIME
 2 hours

ESTIMATED SAMPLE VOLUME
 30.00 Liters

Save Cancel

Select mode and timing (run type); change/enter flow rate, number of cycles, total duration, length of time pump samples, and length of time pump pauses during each cycle.

Select/enter start time.*

Save (upload) or Cancel preset.

† These values are calculated based on the numbers entered. Changing one value will cause the other value to change.

Figure 7. Examples of Continuous and Intermittent Run Presets

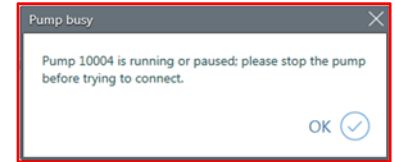
Configuring Pumps/Updating Firmware

Configure Pumps Tab

 Stop pump before configuring pumps or updating firmware.

Updating Firmware

1. Before updating firmware, ensure that the pump is powered on but not running or in pause and the PC is running from AC power. The “Pump busy” box will display if an update is attempted while the pump is running or in pause.
2. Click the Update Firmware button. The File Open dialog box will display. Select the firmware file provided there by SKC.
3. The firmware update process will begin and may take up to 30 minutes. During this time, do not move the pumps from Bluetooth range or power off the PC.



Select Configure Pumps tab.

Select atmospheric pressure and temperature unit display on the pump.

Choose how often selected pump stores data.

Select auto-dim and auto-lock preferences.

Select secure lock.

Change/enter secure lock password.

View number of history records.

View currently installed firmware version number.


Update pump firmware.

Synchronize pump date/time with PC.

Upload settings to selected pump(s). See below right.

Change/enter STP or other standard conditions for volume conversion on the pump.

Appears after settings are changed. Select Save Settings to Pump or Cancel. Copy Settings to Other Pumps will reappear as an option. See right.

-  1-minute average fills memory in approximately 1 week;
- 5-minute average fills memory in approximately 1 month.

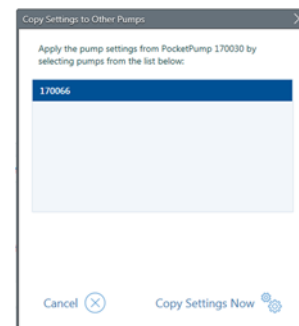
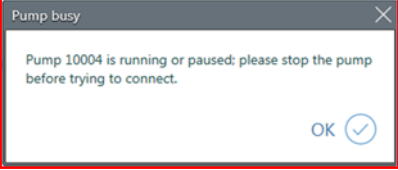
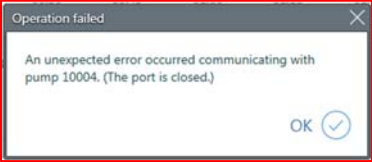
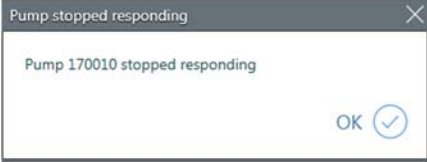


Figure 8. Configure Pumps Tab

Troubleshooting

Issue	Possible Solutions
<p>I am having difficulty connecting to pump(s).</p>	<ol style="list-style-type: none"> 1. Ensure that USB Bluetooth Adapter is inserted in USB port on PC and that pump is powered on and near Bluetooth Adapter. 2. Relaunch DataTrac Pro and click Scan for Pumps button in Pump Display Bar. 3. Close DataTrac Pro, remove and reinsert Bluetooth Adapter, and relaunch DataTrac Pro. 4. Restart PC.
<p>I keep getting a Pump busy box when I click in the Pump Display Bar or the History, Presets, and Configure Pumps tabs.</p> 	<p>The pump is running or in pause. Stop the pump to access History, Presets, and Configure Pumps functions.</p>
<p>This Operation failed box appeared on my PC.</p> 	<ol style="list-style-type: none"> 1. Ensure that USB Bluetooth Adapter is inserted in USB port on PC and that pump is powered on and nearby. 2. Check AC power connection. 3. Relaunch DataTrac Pro and click Scan for Pumps button in Pump Display Bar. 4. Close DataTrac Pro, remove and reinsert USB Bluetooth Adapter, and relaunch DataTrac Pro.
<p>Pump stopped responding box appeared on my PC.</p> 	<p>Select pump again. If pump does not respond, relaunch DataTrac Pro. Ensure that pump is powered on before relaunching.</p>

Software Notes

Version	What's New
V.1.2.6	-Issue version

Appendices

Appendix A

SKC End-user License Agreement

NOTICE TO USER: This is a contract. By installing this software, you accept all the terms and conditions of this End-user License Agreement (EULA). If you do not agree with the terms and conditions shown below, do not install the software.

GENERAL TERMS AND CONDITIONS - This software (the "SOFTWARE") is owned by SKC Inc. ("SKC") and protected by copyright law. SKC gives the user (the "USER") certain rights to use the SOFTWARE after acceptance of the terms and conditions of this EULA.

The USER may:

- Use the SOFTWARE on more than one computer.

The USER may not:

- Use the SOFTWARE with improperly licensed SOFTWARE. The SOFTWARE must be supported by properly licensed SOFTWARE.
- Reverse engineer, decompile, disassemble, modify, translate, make any attempt to discover the source code, or otherwise plagiarize the SOFTWARE.

LIMITED WARRANTY - SKC does not warrant that the SOFTWARE will meet your requirements or that the SOFTWARE is error-free.

THE WARRANTY IS EXCLUSIVE AND IN LIEU OF ALL OTHER WARRANTIES, WHETHER EXPRESS OR IMPLIED, INCLUDING IMPLIED WARRANTIES OF MERCHANTABILITY, FITNESS FOR A PARTICULAR PURPOSE AND NON-INFRINGEMENT. THIS WARRANTY GIVES YOU SPECIFIC LEGAL RIGHTS. YOU MAY HAVE OTHER RIGHTS WHICH VARY FROM STATE TO STATE.

DISCLAIMER OF DAMAGES - USER SHALL NOT BE ENTITLED TO RECOVER FROM SKC INC. ANY CONSEQUENTIAL DAMAGES, DAMAGES FROM USE OF THE SOFTWARE WITH IMPROPERLY LICENSED SOFTWARE, DAMAGES TO PROPERTY, DAMAGES FOR LOSS OF USE, LOSS OF TIME, LOSS OF PROFITS, INCOME, DATA OR OTHER INCIDENTAL DAMAGES ARISING OUT OF THE USE OR INABILITY TO USE THE SOFTWARE. SOME STATES DO NOT ALLOW THE LIMITATION OR EXCLUSION OF LIABILITY FOR INCIDENTAL OR CONSEQUENTIAL DAMAGES TO THE ABOVE LIMITATION OR EXCLUSION MAY NOT APPLY TO YOU.

EXPORT CONTROLS

None of the Software or underlying information or technology may be downloaded or otherwise exported or re-exported (i) into (or to a national of) any country to which the U.S. has embargoed goods; or (ii) to anyone on the U.S. Treasury Department's list of Specially Designated Nationals or the U.S. Commerce Department's Table of Deny Orders. By downloading or using the Software, you are agreeing to the foregoing and you are representing and warranting that you are not located in, under control of, or a national or resident of any such country or on any such list.

U.S. GOVERNMENT END USERS - This EULA conveys only restricted rights, and its use, disclosure, and duplication are subject to FAR 52.227-7013(c)(1)(ii).

GOVERNING LAW AND GENERAL PROVISIONS - This EULA shall be construed under the laws of the Commonwealth of Pennsylvania which shall be deemed to be the situs of the EULA with SKC. This EULA will not be governed by the United Nations Convention or Contracts for the International Sale of Goods, the application of which is expressly excluded. If any part of this EULA is found void and unenforceable, it will not affect the validity of the balance of the EULA, which shall remain valid and enforceable according to its terms. The USER agrees that the SOFTWARE will not be shipped, transferred or exported into any country or used in any manner prohibited by the U.S. Export Administration Act or any other export laws, restrictions or regulations. No other right is given by SKC in conjunction with this EULA.

Appendix B

Exported Sample Event Data Imported into Microsoft Excel

Pocket Pump 170010 Sample201708281130 - Microsoft Excel

	A	B	C	D	E	F	G	H	I	J	K	L	M
	Timestamp	Elapsed Time	Run State	Set Flow (ml/min)	Accumulated Vol (L)	STP Vol (L)	Inlet Press (inH2O)	Temperature (F)	Atmospheric Press (inHg)	Battery Voltage (V)	Battery Percent	DAC Output Counts	Fault Count
1													
2	8/28/2017 11:26	0:00:00	ManualStart	100	0	0	0.1	74.3	29.11	4.008	99	0	0
3	8/28/2017 11:27	0:00:51	FlowFault	100	0.085	0.081	1.4	74.5	29.13	4.024	97	705	1
4	8/28/2017 11:27	0:00:59	Normal	0	0.085	0.081	27.5	74.7	29.11	4.027	97	578	0
5	8/28/2017 11:28	0:01:59	Normal	100	0.198	0.19	0.5	74.5	29.12	4.042	97	494	0
6	8/28/2017 11:28	0:02:07	ManualPause	100	0.211	0.202	0.1	74.8	29.12	4.011	97	494	0
7	8/28/2017 11:28	0:02:10	ManualResume	100	0.211	0.202	0.2	74.8	29.14	4.011	97	0	0
8	8/28/2017 11:28	0:02:22	ManualStop	100	0.231	0.221	0	74.7	29.12	4.018	97	494	0
9													
10													
11													
12													
13													
14													
15													
16													
17													
18													
19													
20													
21													
22													
23													
24													
25													
26													
27													
28													
29													
30													
31													
32													



863 Valley View Road, Eighty Four, PA 15330 USA • Tel: 724-941-9701 • www.skinc.com